

List of Tables

Demography:

- Table 1. Population Composition by School-Age, Working-Age, Dependent-Age Group and Sex, Year _____
- Table 2. Household Population by Urban and Rural Barangay and Average Household Size, Year _____
- Table 3. Urbanization Levels for the past 20 years
- Table 4. Population Density, Gross Density and Built-Up Density, Year _____
- Table 5. Historical Growth of Population
- Table 6. Crude Birth Rate (CBR) and Crude Death Rate (CDR) for the Last Five Years
- Table 7. Literacy Rate of Population 5 years Old and Over, by Sex., Year _____
- Table 8. Labor Force Population By Sex and Employment Status, Year _____
- Table 9. Overseas Workers for the Past 5 years.
- Table 10. Household Population 5 years old and over by Highest Educational Attainment, Year _____
- Table 11. Projected Population and Households
- Table 12. Population Projection by Barangay, Year _____
- Table 13. Projected School-Age Population, Labor Force, and Dependent Population.

Social Sector Study:

A. Education

- Table 14: Schools By Level, Type, Facilities and Condition, SY _____
- Table 15: Student -Teacher and Student - Classroom Ratio by Level, SY _____
- Table 16. Tertiary and Vocational/ Technical Schools by Type and Total Enrolment, SY _____
- Table 17. Historical Enrollment by Level for the Last Three School Years
- Table 18. Projected Classroom, Teacher Requirements in Public Schools by Level
- Table 19. Historical Enrollment Participation Rate for the Last Five (5)Years

B. Health

- Table 20. General Health Situation For The Last Five Years
- Table 21. Medical Health Facilities And Personnel, Year _____
- Table 22. Ten Leading Causes of Morbidity For The Last Three Years
- Table 22-A. Ten Leading Causes of Mortality For The Last Three Years
- Table 23. Malnourished Children For The Last Three Years
- Table 24. Existing Cemeteries And Memorial Parks, Year _____
- Table 25. Number of Households in Occupied Housing Units by Type of Toilet Facilities, Year _____
- Table 26. Projected Requirements For Barangay Health Facilities, Year _____
- Table 27. Solid Waste Generation by Source, Year _____
- Table 28. Methods of Solid Waste Disposal/Treatment, Year _____
- Table 29. Waste Generation by Source and Treatment/Disposal Methods, Year _____

C. Housing

- Table 30. Housing Situation for the Last Three Censal years
- Table 31. Housing Backlog, Year _____
- Table 32. Informal Settlements Areas, Year _____

- Table 33. Inventory of Residential Subdivisions, Year _____
- Table 34. Resettlement Areas, Year _____
- Table 35. Housing Facilities and Utilities Situation, Year _____
- Table 36. Owner of Households in Occupied Housing Units by Tenure Status of Housing Units and Lots, Year _____
- Table 37. Occupied Housing Units by Condition (State of Repair) of the Building and Year Built, Year _____
- Table 38. Inventory of Potential Lands for Housing, Year _____
- Table 39. Current and Projected Housing Need

D. Social Welfare Services

- Table 40. Social Welfare Facilities, Services and Clientele, Year _____
- Table 41. Historical Number of Population Served by Type of Clientele System
- Table 42. Social Welfare Related Projects, Approved/Funded for Implementation, Year _____

E. Protective Services

- Table 43. Protective Services by Facilities and Equipment, Year _____
- Table 44. Barangay Tanod by Type of Service, Year _____
- Table 45. Fire Incidence for the last 5 years
- Table 46. Crime Incidence by Barangay by Type, by Sex of offender for the Last 5 Years
- Table 47. Current and Projected Requirement for Police and Firemen

F. Sports and Recreations

- Table 48. Existing Sports and Recreational Facilities by Barangay, Year _____

Economic Sector Study:

A. Agriculture

- Table 49. Existing Major Agricultural Crops by Area, Production and Market, Year _____
- Table 50. Comparative Agricultural Crop Areas and Production, Y₁ - Y₂
- Table 51. Existing Livestock and Poultry Farms, Year _____
- Table 52. Existing Fishing Grounds and Aquaculture Production, Year _____
- Table 53. Area and Location of Forestlands by Sub-Category and Primary Use, Year _____
- Table 54. Volume of Production by Forest Concessionaires, Year _____
- Table 55. Existing Agricultural Support Facilities and Services, Year _____
- Table 56. Major and Minor Agricultural Occupations/Groups in Urban and Rural Areas, Year _____
- Table 57. Agrarian Related Concerns, Year _____
- Table 58. Comparative Area Utilization of Significant Agricultural Activities
- Table 59. Agriculture Related Projects, Approved/ Funded for Implementation, Year _____

B. Commerce and Trade

- Table 60. Inventory Of Commercial Areas, Year _____
- Table 61. Historical Data On Commercial Areas
- Table 62. List of Business Permits Issued By Type
- Table 63. Inventory of Commercial Establishment By Economic Activities
- Table 64. Employment by Type/Classification/Type Of Business and Trade
- Table 65. Existing Programs And Plans for Commerce and Trade, Year _____

C. Industry

- Table 66. Historical Data on Industrial Areas
- Table 67. Inventory of Existing Industrial Establishments by Intensity and Capitalization, Year _____
- Table 68. Inventory of Existing Industrial Establishment by manufacturing/ Industrial Process; Raw Material Input; Production and Markets
- Table 69. Local Revenue and Industrial Establishment
- Table 70. Inventory of Local Policies relating to Industrial Development, Year _____

D. Tourism

- Table 71. Inventory of Tourism Establishments, Year _____
- Table 72. Accessibility of Existing Tourism Establishment and Tourist Attraction, Year _____
- Table 73. Facilities in Existing Tourism Establishments and Markets Catered, Year _____
- Table 74. Inventory of Tourism Support Facilities and Services, Year _____
- Table 75. Local Revenue and Employment by Tourism Activities, Year _____ to Year _____
- Table 76. Inventory of Tourist by Country of Origin, Year _____ to Year _____
- Table 77. Cultural and Tourism Activities/Festivals
- Table 78. Potential Tourist Attractions in the Locality

Infrastructure Sector Study:

A. Transportation

- Table 79. Inventory of Roads by System Classification and Type of Pavement, Year _____
- Table 80. Inventory of Bridges by Location, Type, Capacity and Condition,, Year _____
- Table 81. Inventory of Ancillary Road Facilities, Year _____
- Table 82. Land Transportation Terminals by Location and Condition , Year _____
- Table 83. Inventory of Public Land Transportation Vehicles by Type and Service Routes, Year _____
- Table 84. Other Modes of Transport and Facilities
- Table 85. Road Accidents by Nature, Location and Frequency for the Past 3 Years
- Table 86. Transport Related Projects, Approved/ Funded for Implementation, Year _____

B. Power

- Table 87. Households Served and Un-served by Electricity, Year _____
- Table 88. Number of Connections by Type of Users and Average Consumption (KWH/Mo.)
- Table 89. Projected Power Requirements by Type of Connections (KWH)

C. Water

- Table 90. Level 1 Water Supply System by Type and Number of Population Served, Year _____
- Table 91. Level 2 Water Supply System by Type and Number of Population Served, Year _____
- Table 92. Level 3 Local Waterworks System by Type and Number of Consumers and Average Water Consumption, Year _____
- Table 93. Other Water sources, Year _____
- Table 94. Existing Surface Water Resources by Type and Classification, Year _____

D. Information & Communication Technology

- Table 95. Communication Services Facilities, Year _____
- Table 96. Type Of Print Media Available, Year _____

List of Annexes

Demography:

- Annex 1 - NSCB Res. No. 14, Series of 2002, Adoption of the Core Indicators for Population and Development (POPDEV) Planning at the Local Level
 - 1.A - Core Indicators for Population and Development (POPDEV) Planning at the Local Level.
- Annex 2 - NSCB Res. No. 2, Series of 2002, Adoption of the Decennial Census-Based Population Growth Rates
- Annex 3 - Relevant Demographic Concepts to POPDEV Planning.
- Annex 4 - NSCB Res. No. 9, Series of 2003, Adoption of the Operational Definition of Urban Areas in the Philippines
- Annex 5 - NSCB Res. No. 6, Series of 2006, Adopting the Methodology Used in Generating the 2000 Census of Population and Housing-Based National, Regional and Provincial Population Projections

Social Sector Studies:

A. Education

- Annex 6 - Standards and Guidelines for Education
- Annex 7 - Sample Computations Using DepEd Methods

B. Health

- Annex 8 - Definition of Terms and DOH Standards
- Annex 9 - Minimum Locational Considerations: Sanitary Landfills, Controlled Dumpsites, and Sewerage Disposal

C. Housing

- Annex 10 - Assessment Tools and Methods
- Annex 11 - Glossary and Classification of Housing Terms

D. Social Welfare Services

- Annex 12 - DSWD Priority Programs and Projects for CY ____
- Annex 13 - Related Laws and Guidelines on Social Welfare Services

E. Protective Services

- Annex 14 - Protective Services Standards
- Annex 15 - Relevant Provisions of the Law (Fire & Jail)

F. Sports and Recreation

- Annex 16 - Glossary of Terms (Recreational Facilities)
- Annex 17 - Standards For Recreational Facilities

Economic Sector Study:

A. Agriculture

Annex 18 - Criteria For Suitability of Agricultural Land Uses

B. Commerce and Trade

Annex 19 - Site Selection Criteria For Commercial Areas

C. Industry

Annex 20 - Industry Classification

D. Tourism

Annex 21 - Criteria to Determine Attractiveness of an Area and their Corresponding Weights

E. Integrated Economic Sector Study

Annex 22 - SWOT Analysis Technique

Annex 23 - Philippine Standard Industrial Classification (PSIC)

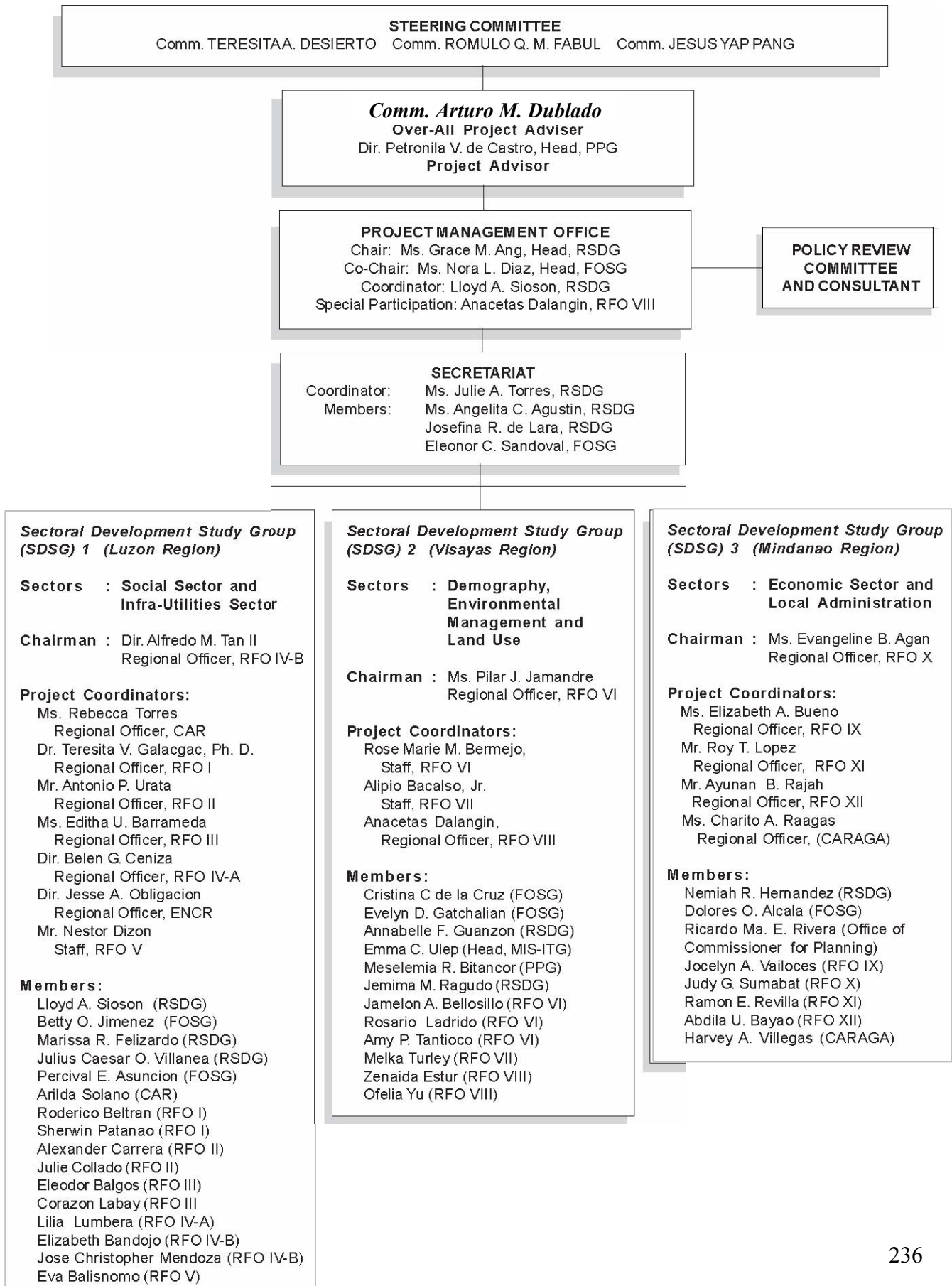
Infrastructure Sector Study:

Annex 24 - Classification of Fresh Surface Water (Rivers, Lakes, Reservoirs, etc.)

References

- Commission on Population (PopCom), *Gender-Responsive and Development Planning Guide*.
- DENR-EMB and Presidential Task Force on Waste Management. 1988. *Solid Waste Management for Local Governments*.
- Department of Health (DOH), *Health Services and Local Autonomy*.
- Housing and Land Use Regulatory Board. 1996-1999. *Guidelines for the Formulation/Revision of Comprehensive Land Use Plan, 10 volumes*.
- Housing and Land Use Regulatory Board. 2000. *Implementing Rules and Regulations for Memorial Parks and Cemeteries*,
- Integrated Environmental Management for Sustainable Development (IEMSD) Programme. 1997. *Guidebooks on Sustainable Land Use Planning and Management. Volumes 1-6*.
- Peter Schuber, Karl Wehrle and Jurg Christen. 1996. *Conceptual Framework for Municipal Solid Waste Management in Low-Income Countries*. Working Paper No.9 UNDP/UNCHS (Habitat/SDC Collaborative Programme on Municipal Solid Waste Management in Low-Income Countries.
- PD 856; *Sanitation Code of the Philippines*.
- RA 1082; *The Rural Health Act*.
- RA 7160; *Rules and Regulations Implementing the Local Government Code of 1991*.
- RA 7279; *Urban Development and Housing Act of 1992*.
- RA 7586; *National Integrated Protected Areas System Act (NIPAS)*.
- RA 8435; *Agriculture and Fisheries Modernization Act (AFMA)*.
- RA 8437; *Indigenous People's Rights Act of 1997*.
- RA 9003; *Ecological Waste Management Act*.

PROJECT ORGANIZATION





HOUSING AND LAND USE REGULATORY BOARD

HLURB, Building, Kalayaan Avenue,
cor. Mayaman St., Diliman, Quezon City
E-mail: www.hlurb.gov.ph