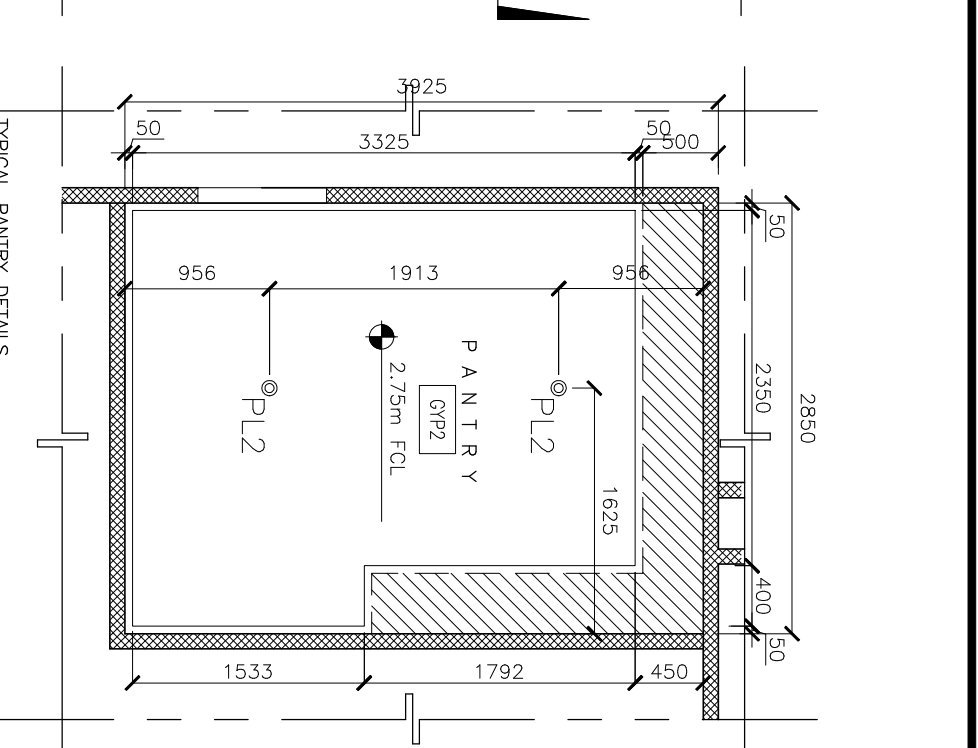
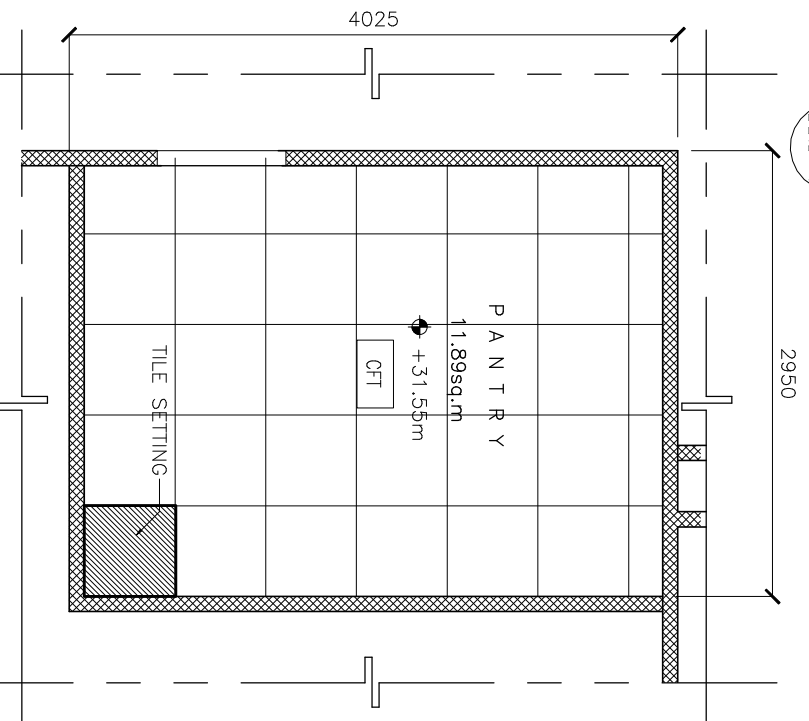


1
TYPICAL PANTRY DETAILS
BLOW-UP PLAN
SCALE 1:50 MTS
BBID-1

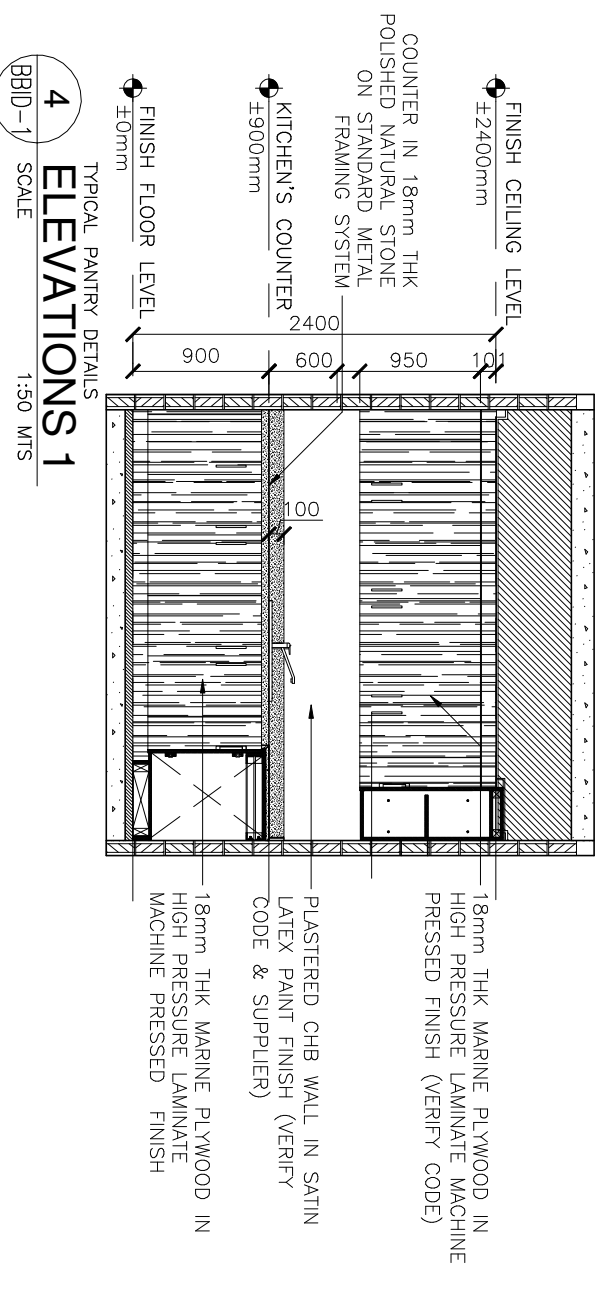


2
TYPICAL PANTRY DETAILS
REFLECTED CEILING PLAN
SCALE 1:50 MTS
BBID-1

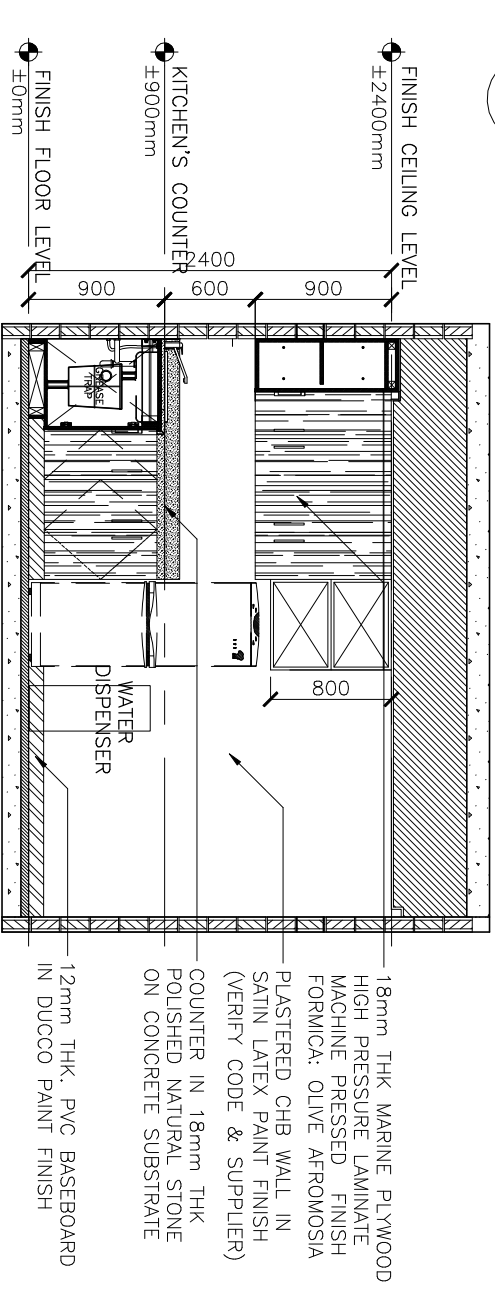


3
TYPICAL PANTRY DETAILS
FLOOR PATTERN LAYOUT
SCALE 1:50 MTS
BBID-1

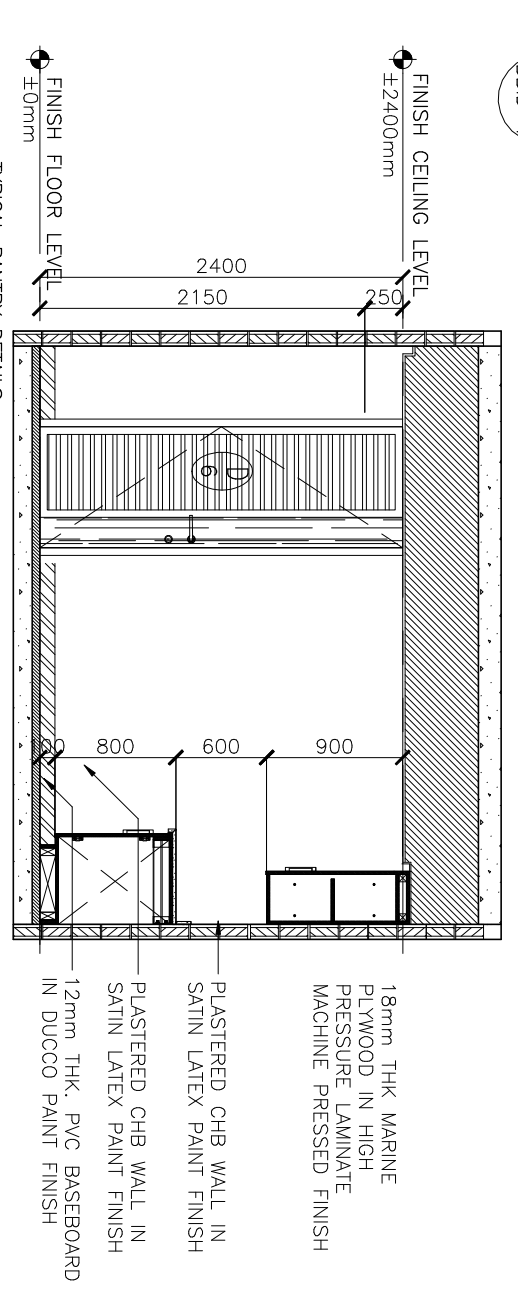
- LEGEND**
- WALL TAGS:
- ① PLAN CEMENT PLASTERED CHB WALL IN SATIN LATEX PAINT FINISH
- CEILING FINISH/LIGHTING FIXTURES:
- GYP2 12mm THK. MOISTURE-RESISTANT GYPSUM BOARD ON STANDARD METAL FRAMING SYSTEM IN FLAT LATEX PAINT FINISH
 - PL2 100mm ϕ , 8W LED COOL WHITE RECESSED MOUNTED DOWNLIGHT ON ALUMINUM DIE-CAST CASING WITH ACRYLIC DIFFUSER
- FLOOR FINISH:
- CFT 300mmx300mm POLISHED CERAMIC TILES



4
TYPICAL PANTRY DETAILS
ELEVATIONS 1
SCALE 1:50 MTS
BBID-1



5
TYPICAL PANTRY DETAILS
ELEVATIONS 2
SCALE 1:50 MTS
BBID-1



6
TYPICAL PANTRY DETAILS
ELEVATIONS 3
SCALE 1:50 MTS
BBID-1

JONATHAN O. GAN
ARCHITECTS INTERIOR DESIGNERS ENGINEERS

10 St. Paul Street, Quezon, City
Tel: 7219151, 7219152
Fax: 7256625
E-mail: jonathan@jonathano.com.ph

SEC. 33. OWNERSHIP OF PLANS, SPECS. AND OTHER CONTRACT DOCUMENTS - DRAWINGS AND SPECS. AND OTHER CONTRACT DOCUMENTS DULY SIGNED, STAMPED AND SEALED AS AN INSTRUMENT OF SERVICE, ARE THE INTELLECTUAL PROPERTY AND DOCUMENTS OF THE ARCHITECT. WHETHER THE OBJECT FOR WHICH THEY ARE MADE ARE EXECUTED OR NOT, IT SHALL BE UNLAWFUL FOR ANY PERSON TO REPRODUCE OR TO MAKE COPIES OF SAID DOCUMENTS FOR USE AND PUBLICATION OR TO MAKE COPIES OF SAID DOCUMENTS FOR USE AND PUBLICATION PARTIALLY OR IN A WHOLE WITHOUT THE WRITTEN CONSENT OF ARCHITECT OR AUTHOR OF SAID DOCUMENTS.

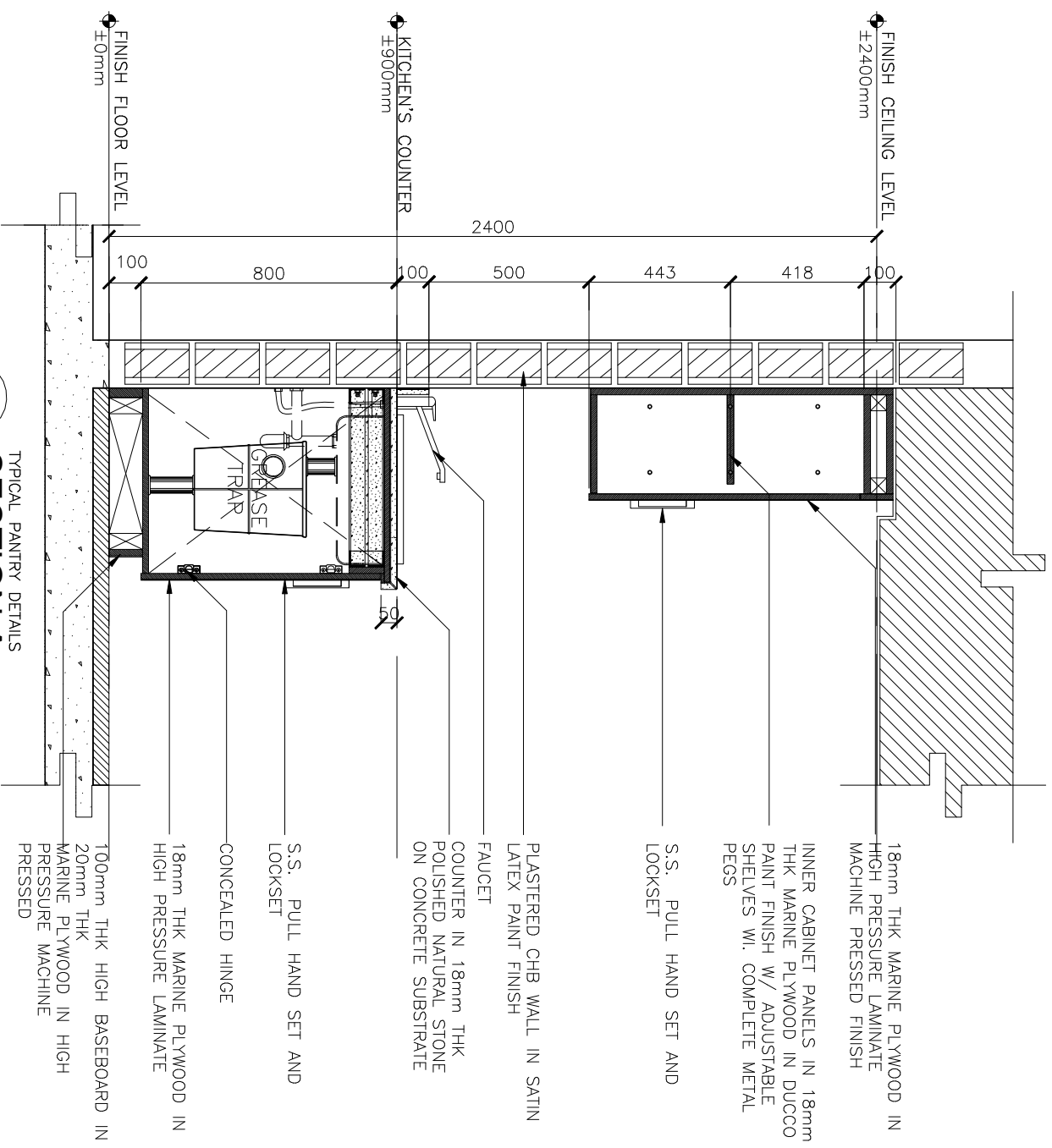
OWNER/LOCATION:
HOUSING AND LAND USE REGULATORY BOARD
KALAYAN AVE., DILIMAN, QUEZON CITY

PROJECT TITLE:
PROPOSED NINE (9) STOREY HURB OFFICE BUILDING

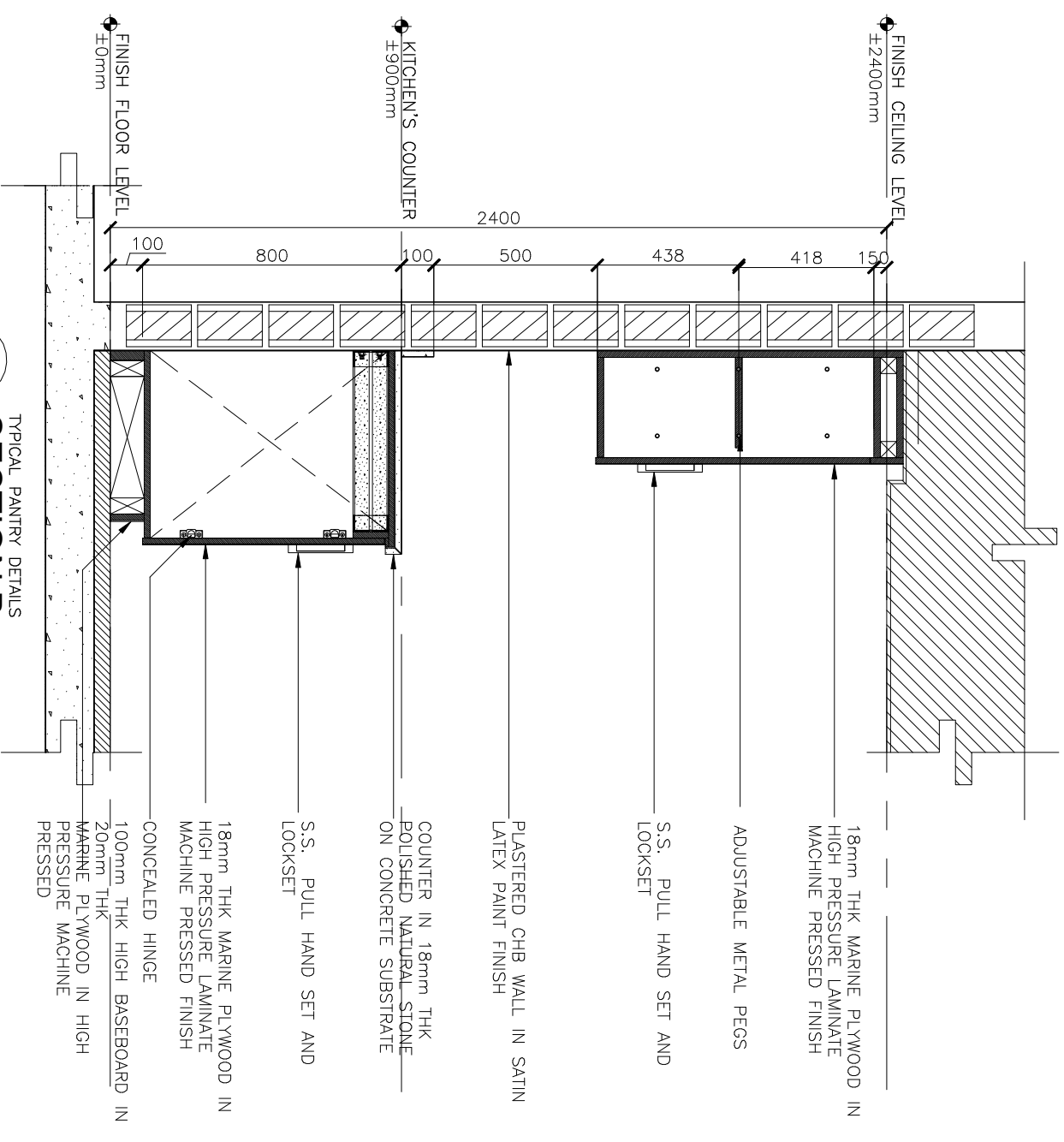
DRAWING TITLE:
PANTRY DETAILS

DATE:
2015-12-08

BBID-1



1
SECTION A
SCALE 1:20 MTS
BBD-2



2
SECTION B
SCALE 1:20 MTS
BBD-2

N
NW
NE
SW
SE
S

JONATHAN O. GAN
ARCHITECTS INTERIOR DESIGNERS ENGINEERS

• 10 St. Paul St.
Quezon, City
• Tel: 7219151
• Fax: 7256625
• E-mail: jonathan@jogarchitects.com

SEC. 33. OWNERSHIP OF PLANS, SPECS. AND OTHER CONTRACT DOCUMENTS - DRAWINGS AND SPECS. AND OTHER CONTRACT DOCUMENTS DULY SIGNED, STAMPED AND SEALED AS AN INSTRUMENT OF SERVICE, ARE THE INTELLECTUAL PROPERTY AND DOCUMENTS OF THE ARCHITECT. WHETHER THE OBJECT FOR WHICH THEY ARE MADE ARE EXECUTED OR NOT, IT SHALL BE UNLAWFUL FOR ANY PERSON TO REPRODUCE OR TO MAKE COPIES OF SAID DOCUMENTS FOR USE AND PUBLICATION OR TO MAKE COPIES OF SAID DOCUMENTS FOR USE AND PUBLICATION OF ANY KIND WITHOUT THE WRITTEN CONSENT OF ARCHITECT OR AUTHOR OF SAID DOCUMENTS

OWNER/LOCATION:
HOUSING AND LAND USE REGULATORY BOARD
KALAYAN AVE., DILIMAN, QUEZON CITY

PROJECT TITLE:
PROPOSED NINE (9) STOREY HURB OFFICE BUILDING

DRAWING TITLE:
PANTRY DETAILS

DATE:
2015-12-08

DRAWING NO
BBD-2